



# Community Toolkit



# Overview

Child care is an essential workforce support which contributes to the overall economic health of communities. Working families often struggle to find accessible and affordable child care options, which can directly impact the local economy and prosperity of residents. It is estimated companies lose an estimated \$4.4 billion annually as a consequence of child care-related absences.<sup>1</sup> At the community level, this means lowered spending as the number of individuals in the workforce is lessened. Communities with a strong child care infrastructure are better able to attract businesses and residents.

Child Care Aware® of Kentucky offers a variety of consumer education resources and services to support you in addressing child care needs in your community. We provide a variety of resources for families, businesses, and the child care community. This toolkit is designed to provide supports for individuals and community groups interested in increasing access to quality child care and strengthening the local child care infrastructure.

# Who We Are

Child Care Aware® of Kentucky is committed to ensuring families have access to safe, affordable, quality care. Our goal is to improve child care quality by offering training and technical assistance to child care providers and connecting the community to resources and educational materials which support quality child care.

# What's Included in the Community Toolkit?

Overview.....	p. 2
Why Does Child Care Matter to Local Communities?.....	p. 3
What Are Families Paying for Child Care? .....	p. 4
Are Families Aware of the Child Care Assistance Program? .....	p. 4
Employee Child Care Assistance Program .....	p. 5
Child Care is a Workforce Issue– Relationship with Community Wellness.....	p. 6
Would Your Employer Like to Participate?.....	p. 6
Employer and Family Toolkits.....	p. 6

<sup>1</sup> Child Care Aware of America. (2019). *The US and the High Price of Child Care: An Examination of a Broken System*. Arlington, VA: Child Care Aware of America.

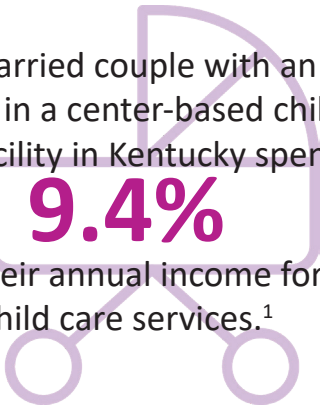
<sup>2</sup> Kumar, A. (2018, March 8). *How Unreliable and Costly Childcare Keeps People Off the Job*. Retrieved from Forbes: <https://www.forbes.com/sites/aakashkumar/2018/03/08/how-unreliable-and-costly-childcare-keeps-people-off-the-job>

# Why Does Child Care Matter to Local Communities?

A married couple with an infant in a center-based child care facility in Kentucky spends

**9.4%**

of their annual income for child care services.<sup>1</sup>



**\$14,160**



The annual cost of child care for two children in a center-based child care facility in Kentucky.<sup>2</sup>



Investing in **high-quality child care and early learning programs** can generate

**\$7.30**

per every dollar invested.<sup>3</sup>

**Unscheduled absenteeism** costs U.S. employers



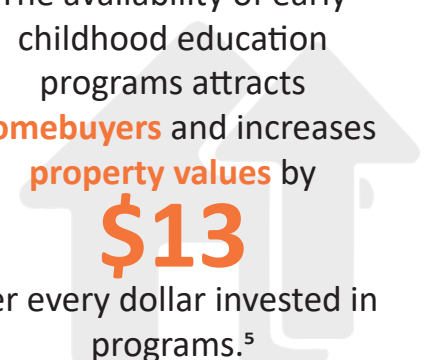
**\$3,600**

per  
**Employee**  
per  
**Year**<sup>4</sup>

The availability of early childhood education programs attracts **homebuyers** and increases **property values** by

**\$13**

per every dollar invested in programs.<sup>5</sup>



## Engaging Local Communities in Child Care Solutions

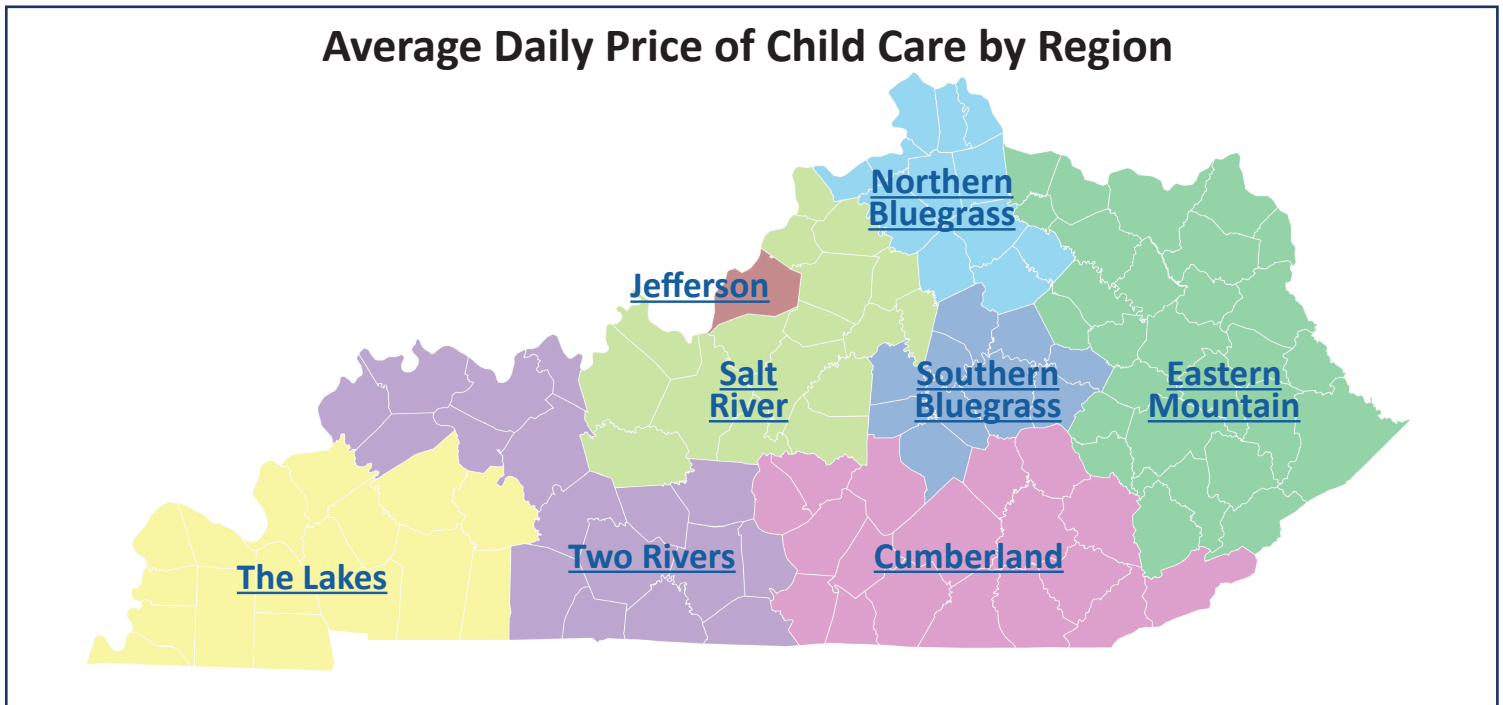
- What connections might you have to help start a conversation about the importance of access to quality child care in your community?
- Are there local employers that are currently investing in child care solutions for their employees? Are there local employers who might be interested in learning more?
- How is the local Chamber of Commerce assisting with access to quality child care?
- Are local high schools partnering with child care on co-op opportunities for Family and Consumer Science students?
- Are there vacant child care buildings or vacant lots owned by the city/county that could be available for opening a child care?

1, 2, and 4 Child Care Aware of America. (2019). *The US and the High Price of Child Care: An Examination of a Broken System*. Arlington, VA: Child Care Aware of America.

3 and 5 First Five Years Fund. (2024, March 6). *Fact Sheet: Child Care and the Economy*. Retrieved from First Five Years Fund: <https://www.ffyf.org/2024/03/06/fact-sheet-child-care-and-the-economy/>

# What Are Families in Your Area Paying for Child Care?

Click a region on the interactive map below to find daily child care rates for licensed child care facilities and certified family child care homes broken down by age group and full-time and part-time care.



# Are You Aware of the Child Care Assistance Program?

The [Child Care Assistance Program](#) (CCAP) provides support to help families pay for child care. Applicants for child care must have gross income at or below 85% of the State Median Income (SMI). For more information, or to apply for the Child Care Assistance Program, call 1-855-306-8959 or visit [kynect.ky.gov](http://kynect.ky.gov).

Family Size	85% or State Median Income (SMI)
2	\$50,604
3	\$62,520
4	\$74,424
5	\$86,328
6	\$98,232
7	\$100,464
8	\$102,708
8+	Add \$2,232 per person

# Employee Child Care Assistance Program

The Employee Child Care Assistance Partnership program is an agreement between employers, employees, and the Cabinet for Health and Family Services. Employers determine a contribution to pay toward Employee child care expenses. The Cabinet for Health and Family Services matches the employer contribution based on a sliding scale associated with the employee's annual wage. Payments are made directly to the regulated child care provider of the family's choice. For more information, visit [Employee Child Care Assistance Partnership Program](#).

## Monthly Income by Household Size

Employee Household Income Compared to State Median Household Income	HH2*	HH3	HH4	HH5	HH6	HH7	HH8	HH9	HH10	Each Additional HHM**
100%	\$4,961	\$6,128	\$7,296	\$8,463	\$9,631	\$9,849	\$10,068	\$10,287	\$10,506	+\$219
120%	\$5,953	\$7,353	\$8,755	\$10,155	\$11,557	\$11,818	\$12,081	\$12,344	\$12,607	+\$262
140%	\$6,945	\$8,579	\$10,214	\$11,848	\$13,483	\$13,788	\$14,095	\$14,401	\$14,708	+\$306
160%	\$7,937	\$9,804	\$11,673	\$13,540	\$15,409	\$15,758	\$16,108	\$16,459	\$16,809	+\$350
180%	\$8,929	\$11,303	\$13,132	\$15,233	\$17,335	\$17,728	\$18,122	\$18,516	\$18,910	+\$394

\***HH#** = Monthly income of household with # members (for example: HH2 = Monthly income of a household with 2 members)

\*\***HHM** = Household Member

## State Contribution Match Scale

Employee Household Income Compared to State Median Household Income	State Match Percentage
Equal to or less than 100%	100%
Above 100% through 120%	90%
Above 120% through 140%	80%
Above 140% through 160%	70%
Above 160% through 180%	60%
Above 180%	50%

## Questions??

If you have questions about the Employee Child Care Assistance Partnership Program or want to strategize ways to recruit and retain employees with child care needs, contact:

**Kate Dean**  
**Director of Community-Based Partnerships & Strategy**  
[kate.dean@uky.edu](mailto:kate.dean@uky.edu)

# Would Your Employer Like to Participate?

## Child Care Landscape



### [Child Care Landscape Report](#)

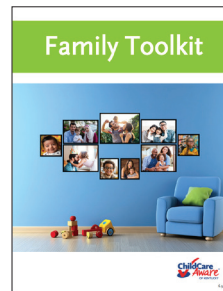
We can provide you with a picture of the current child care facilities in your county or within a certain mile radius of your business including: number of high quality programs, providers accepting Child Care Assistance Program (CCAP) subsidy, programs open nontraditional hours, and programs offering transportation. We can also provide the average price per day for child care in a particular county.

## Toolkits for Employers and Families



The Employer Toolkit is full of resources and strategies to support employees with children, including info about subsidy options.

### [Employer Toolkit](#)



The Family Toolkit includes resources and handouts for families around choosing quality child care, paying for child care, and monitoring milestones.

### [Family Toolkit](#)

## Community Consultations and Choosing High Quality Child Care Presentations



We can provide consultation to assist with developing questions and talking points for community-based discussions around child care. We can conduct presentations to help invested community partners identify what high quality child care looks like, understand the cost of child care and subsidy supports.

## Referral Service

The Commonwealth of Kentucky's space for you to connect with state resources.

To search for child care facilities across the state with options that may meet your family's specific needs. The list of child care facilities you receive does not imply recommendations to specific facilities.



### [Child Care Search](#)

Child Care Referral Specialist  
877-316-3552