

What will be Inside this Newsletter

- » Innovation Corner
- » Assessing Community Based Child Care Needs
- » Workforce SWATT
- » Meet Our Staff

Innovation Corner



In April, United Way of the Coalfield partnered with Child Care Aware of Kentucky to survey the local community in Hopkins and surrounding counties. The survey focused on current and future child care needs at the local level. United Way of the Coalfield collected this information in conjunction with a project designed to expand availability of affordable quality child care for families. Jay Parrent shared, "Partnering with Child Care Aware of Kentucky on this survey was an important step in understanding the real child care challenges facing families in our region. The data we collected will help us make the case for solutions that are grounded in what our community actually needs. We're grateful for CCAKY's expertise and collaboration, and we look forward to working together." Child Care Aware of Kentucky will continue providing supports as the project moves forward

The survey was announced in April and is now closed: www.the-messenger.com



NKY Works

Earlier in the month, NKY Works launched a survey to assess the child care needs of local government employees. This survey captures information on local needs for employees in-eligible to participate in ECCAP - the data will assist with efforts to explore increased access to affordable, quality child care in Boone, Campbell, and Kenton Counties. To learn more about NKY Works, visit www.nkyworks.org, or contact Dr. Vicki Berling at NKYWorks@NKADD.org.



*To highlight an innovative early care and education initiative in your community, please email kate.dean@uky.edu

Assessing Community Based Child Care Needs

CCA has a number of tools available for communities interested in assessing the need for additional child care within their local communities. Checkout these four items and contact Kate Dean to learn more about guided discussion and consultation services - Kate.Dean@uky.edu.

Child Care Aware of Kentucky Community Toolkit



Is finding quality child care difficult in your community? Don't know how to start a conversation or get others interested in helping bring child care to your community? The Community Toolkit is filled with resources and tools that can help.

Download the Community

Toolkit here - www.childcareawareky.org/wp-content/uploads/2026/05/Community-Toolkit-2026.pdf

Child Care Aware of Kentucky Landscape Report

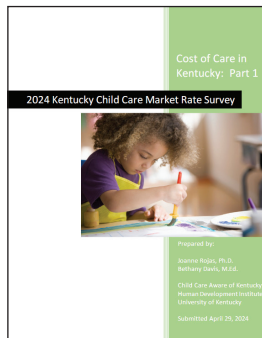


A picture of the current child care facilities in your county or within a certain mile radius of your business including: number of high quality programs, providers accepting Child Care Assistance Program (CCAP) subsidy, programs open nontraditional hours, and

programs offering transportation.

Download the Landscape Report here www.childcareawareky.org/wp-content/uploads/2026/03/Child-Care-Landscape-Report-FINAL-3.10.26.pdf

Market Rate Survey

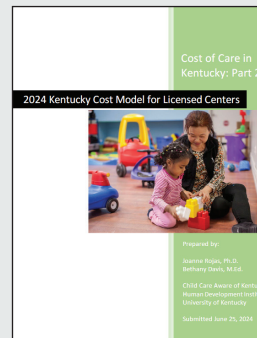


This Market Rate Survey has been conducted in support of the Kentucky Cabinet for Health and Family Services, Division of Child Care (DCC), as required by the Child Care and Development Fund (CCDF) Final Rule. This study provides data to inform the provision of Child Care and

Development Block Grant (CCDBG) subsidies that are sufficient to ensure that eligible children have the same access as non-eligible children to child care spots. The federal benchmark for equal access is the 75th percentile. However, as is the policy of DCC for calculating Child Care Assistance Program (CCAP) subsidies, market rates are calculated at the 80th percentile.

To download the most current market rate survey (2024), click here - www.childcareawareky.org/wp-content/uploads/2026/03/2024-Market-Rate-Report-accessible-3.25.26.pdf

Kentucky Cost Model for Licensed Centers



Child care providers are critical to supporting families who need safe, high-quality environments in which children from birth to school age can be nurtured while their families are working. However, the business model behind providing

this kind of care is challenging to providers and families alike (Aigner-Treworgy, Osborn, & Smith, 2022; Coffey, 2023; U.S. Department of the Treasury, 2021). The fees collected from families, including families that receive federal subsidies from the government to help pay for their child care, typically do not cover all the costs of running a safe and high-quality center. These include personnel costs such as wages and benefits and non-personnel costs like rent or mortgage, insurance, utilities, food costs, or classroom supplies.

To download the most recent version of Kentucky's cost model for licensed centers (2024) click here - www.childcareawareky.org/wp-content/uploads/2026/03/Cost-of-Care-in-Kentucky-Part-2-Cost-Model-accessible-3.25.26.pdf

Workforce SWATT Info



JOIN US!
ECE SWATT MEETING FOR ECE AND WORKFORCE!

Kentucky's Early Childhood Statewide Workforce & Talent Team (ECE SWATT) is bringing ECE professionals and workforce partners back together – this time to go deeper, learn more about each other's worlds, and start building real regional connections.

Join us on September 3rd to:

- ★ Hear directly from ECE partners about who they are, what they do, and where they need support
- ★ Learn what workforce programs, funding, and services are available – and how ECE programs can access them
- ★ Dig into regional conversations about what already exists locally and where the gaps are

This meeting is the next step in building lasting ECE-workforce partnerships across all 10 Kentucky workforce regions – region by region, relationship by relationship.

Virtual Meeting
September 3rd, 2026
1:30-3:30pm
EST

Scan to Register



ECE SWATT (Early Childhood Education Statewide Workforce and Talent Team) is a collaborative initiative focused on strengthening Kentucky's early childhood workforce through regional partnerships, workforce strategies, and coordinated support. ECE SWATT brings together workforce professionals, early childhood employers, Child Care Resource & Referral agencies, training providers,

and community partners to address hiring, retention, training, and workforce pipeline challenges in the ECE industry. The goal is to build sustainable workforce solutions that support early childhood programs, strengthen the workforce system, and increase access to quality child care for Kentucky families.

Want to get involved? Scan the QR code below to register for the next meeting or contact Kayla.Jude@ky.gov for any questions.

Meet Our Staff



Dr. Angela Cooper

Child Care Administrator

Dr. Angela Cooper, EdD is the Child Care Administrator for the Cumberland Region. Angela is passionate about the importance of quality play-based learning environments for children with special needs and brings over 30 years of experience in the field of Early Childhood Education.