

JUNE 2025

ECE-INSIDER

Division of Child Care Provider Newsletter



From the Director's Desk

Andrea Day

Please join us on **Tuesday, June 17th at 1:00 PM EST** to discuss the new health and safety regulation amendments with the Division of Regulated Child Care (DRCC). 922 KAR 2:090 – Child-care center licensure and 922 KAR 2:120 – Child-care health and safety standards have been amended and became effective on February 20, 2025. During this townhall meeting there will be opportunities to ask questions.

***IMPORTANT, please read regarding the zoom link.**

Child care providers and partner organizations must register to attend. Once you register, do not share your unique link to get into the meeting. DCC will be able to tell if you shared your link, and you risk not being admitted. We want to ensure the meeting is free from any spam.

Partners, if you share this information to social media, please invite individuals to sign up for the DCCListServ in lieu of sharing the zoom registration link.

Zoom Registration:

When: June 17, 2025, 01:00 PM Eastern Time (US and Canada)

Register in advance for this meeting:

<https://us02web.zoom.us/join/register/>

LwPWMLgxSO2lR2jS8q1Kmg

IN THIS ISSUE

FROM THE DIRECTORS DESK

**ECE-TRIS BLACKOUT PERIOD
REMINDER**

**CELEBRATING FATHER
FIGURES**

**FREE TRAINING
OPPORTUNITY FROM KEIS**

CPR/AED AWARENESS WEEK

**MEET THE CHILD CARE
HEALTH CONSULTANTS!**

**STRENGTH BASED APPROACH
IN ECE STRATEGIES**

**KDE- PARENT NEWSLETTER
TO SHARE WITH FAMILIES**

Reminder: ECE TRIS Transition to KY TRIS – Blackout Period

Dear Child Care Providers,

ATTENTION! Starting on **June 13th, 2025**, the ECE TRIS system will be turned off as we transition to a new platform, KY TRIS. However, you will not be able to access KY TRIS **until August 1st, 2025**. **This six-week outage will impact your system access. Immediate action is required.**

What do you need to do now?

1. *“Pediatric Head Trauma” module in Moodle:*

NEW HIRES: *Complete the “Pediatric Head Trauma” module in Moodle by June 13th, 2025, but they have a full year from their hire date to stay compliant.*

EXISTING STAFF: *If you need to repeat the “Pediatric Head Trauma” module between June 13th, 2025, and August 1st, 2025, you should renew before June 13th, 2025. This applies to staff who completed it over four years ago and must repeat it for compliance by the fifth year.*

2. **NEW HIRES:** *Complete “Orientation” within the first three months of employment.*

3. **EVERYONE:** *Complete all required training hours by June 30th, 2025, or before end of First Year or Second Year Review periods if not on standard fiscal year. [Note: Review approved training calendar [HERE](#) and make sure to request approval for trainings scheduled between June 13th, 2025, and July 31st, 2025, in advance of the system outage.]*

4. EVERYONE: Please refer to the training calendar for details on the credit process, which requires self-reporting with a certificate by June 13th, 2025. For trainings completed between June 13th, 2025, and July 30th, 2025, submissions can begin on August 1st, 2025, when the system reopens. To avoid processing delays, submit your training completions promptly, as training citations will start on October 2nd, 2025.

Thank you for your continued support as we transition from ECE TRIS to KY TRIS.

Division of Child Care

This message was also sent out on the DCC ListServ 5/29/2025

To join the DCC ListServ or Add Staff to the DCC ListServ please email DCCListserv@ky.gov

If you have questions about the transition, please email dccpdinbox@ky.gov

Celebrating Father Figures

Father's can often be seen and understood as the hero for their young children. Father figures are often associated with the head of household, the "breadwinner" and the strength of the family. By taking time to help children understand that fathers have feelings, sometimes express emotions differently, and can make mistakes too, you as the provider help to humanize the hero!

To learn more about the impacts of fathers and father figures in child development please visit: <https://www.ccffky.org/>



FREE TRAINING OPPORTUNITY!

Navigating Early Intervention and Beyond for Early Childhood Providers

Free Training Opportunity from our Partners! Please note: Credit may not show on training record until after the blackout period is completed, but will be issued for the date of the training.



Navigating Early Intervention and Beyond for Early Childhood Providers Webinar

June 10, 2025 12-1pm ET

Presenters:

Sally Dannenberg, Child Care Aware of Kentucky

Angela Casey, New Vista KEIS Program

Eileen Hoover and Rhonda Logsdon, KY-SPIN

ECE-TRIS Credit

This training session provides early childhood professionals with a foundational understanding of the Individuals with Disabilities Education Act (IDEA), focusing on the continuum of services from birth through age 21. Participants will learn about IDEA Part C (Early Intervention for infants and toddlers, birth to age 3) and Part B (Special Education services for children and youth ages 3-21), including key processes, timelines, and the transition from an Individualized Family Service Plan (IFSP) to an Individualized Education Program (IEP).

REGISTER NOW



<https://tinyurl.com/ahrv6yv5>

**For more information
contact Eileen Hoover**



(859) 300-2251



eileen@kyspin.com



kyspin.com/contact/

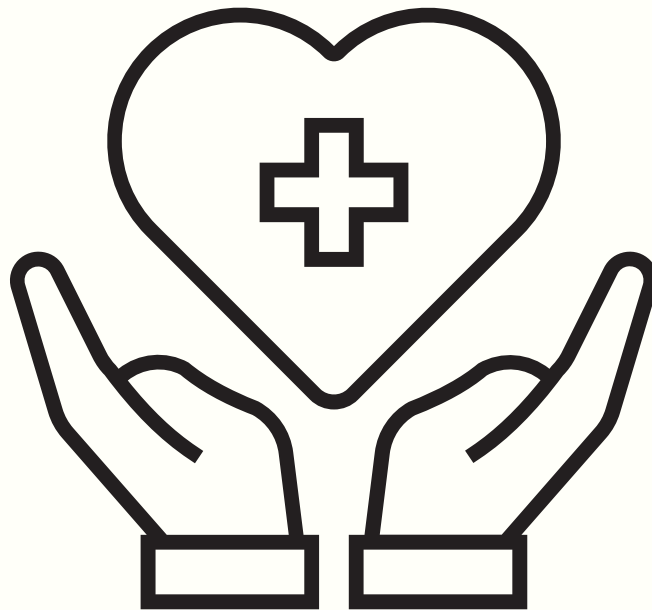
National CPR and AED Awareness Week

Reminder* ALL ECE-TRIS Account information will transfer to the new system after the blackout period has ended. You do not need to download copies of your credentials and records.

June 1st – June 7th is National CPR and AED Awareness week! The Division of Child Care is committed to supporting child care providers and their communities in Kentucky by encouraging anyone who works with young children to get certified in First Aid and CPR. Early care and education professionals have one of the most important jobs out there and everyone at the Division of Child Care wants to support you.

TO VIEW A LIST OF DCC APPROVED CPR/FIRST AID CERTIFICATION AGENCIES, PLEASE VISIT:

**[HTTPS://ECE.TRC.EKU.EDU/PDFS/
APPROVEDFIRSTAIDANDCPRINCL.EPIPENSREV.8.21.24.PDF](https://ECE.TRC.EKU.EDU/PDFS/APPROVEDFIRSTAIDANDCPRINCL.EPIPENSREV.8.21.24.PDF)**



Meet the Child Care Health Consultants!

JEANNA PHELPS, RN.

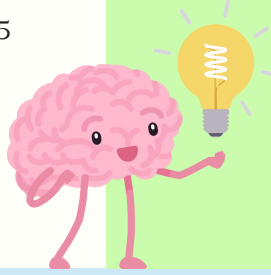


Jeanna Phelps has been a nurse for 21 years, with 16 of those years at the health dept with pediatrics. Jeanna loves teaching and assisting the child cares, schools, and community with special needs, autism, and emotional behavior issues. Jeanna has been married 33 years and is a mother 2 adult girls, one with special needs and the reason she became a nurse! She is also 'Gigi' 3 girls and 1 boy.

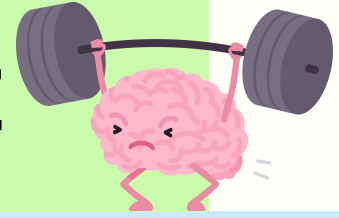
Her contact info:

Child Care Health Consultant
Child Fatality Review/Injury Prevention
Barren River District Health Department
1109 State Street Bowling Green, KY 42103
Office: 270-781-8039 ext. 142
jeanna.phelps@barrenriverhealth.org

**Serves counties: Campbell, Kenton, Boone, Gallatin, Grant,
Pendelton, Owen, Carroll**



Strength-based Approach in ECE



The Importance of Building Community

Building communities in your classroom has many benefits and can easily contribute to a strength-based approach in your ECE-Classroom or Center as a whole.

- **Building community in the classroom can help model what it means to be a part of a bigger community.**
 - Classroom jobs help everyone to contribute and build ways for everyone to participate.
 - Classroom Routines help children understand that routines are a part of every day life.
- **Building community in the classroom help develop relationships and communication.**
 - Having a classroom community helps children to understand friendships and relationships with peers and adults by activities that are completed together.
 - Children will learn how to communicate with each other and adults through modeling. Use situations in the classroom to model appropriate communication.
 - Instead of tattling try “I notice you don’t like when James cuts line, tell James “I don’t like when you cut line, please wait your turn.”

Ways to build community in your classroom:

Classroom Rituals and Songs:

Greeting Rituals: <https://consciousdiscipline.com/memberships/free-resources/shubert/drop-off/greeting-ritual/#howto>

School Songs: <https://consciousdiscipline.com/memberships/free-resources/shubert/hallway/school-family-songs/>

Additional Resources:

Division of Child Care

<https://www.chfs.ky.gov/agencies/dcbs/dcc/Pages/default.aspx>

Division of Regulated Child Care (DRCC)

<https://www.chfs.ky.gov/agencies/os/oig/drcc/Pages/default.aspx>

Child Care Aware Tips and Tools

<https://www.childcareawareky.org/tips-and-tools/>

Family Child Care Network

<https://www.fccnky.com/>

ECE-TRIS

ecetris@eku.edu Phone: (859)622-8811
8:00 AM - 4:30 PM EST, M-F

Child Care Health Consultants

<https://www.kentuckyccchc.org/>

Help Me Grow Kentucky

<https://www.childcareawareky.org/tips-and-tools/>
<https://www.chfs.ky.gov/agencies/dcbs/dcc/Pages/hmg.aspx>



KENTUCKY DEPARTMENT OF EDUCATION FAMILY NEWSLETTERS

The Kentucky Department of Education's Office of Special Education and Early Learning (OSEEL) provides access to a monthly newsletter, Helping Children Learn, written by The Parent Institute, and an activity planner to support families with early learners. These resources are filled with engaging daily learning activities that parents and caregivers can do with their children!

Please click on the links below for the current newsletter.

[Helping Children Learn-Family Newsletter \(English\)](#)

[Helping Children Learn-Family Newsletter \(Spanish\)](#)

[Daily Learning Planner for Families \(English\)](#)

[Daily Learning Planner for Families \(Spanish\)](#)

